

# Middlesex Community College

## Student Assessment

### Placement Information Session



# English Placement



# English 101 Course Placement

## US High School Transcripts

- Mid-year or final 2.7 GPA (10 yrs)
- 2.69 – 2.0 ENG 109/ENG 101
- 1.99 and below – ENG 092

## High School Equivalency Exams

- HiSet Language Arts score of 15 or higher (10yrs)
- GED RLA score of 165 or higher (10yrs)

## Standardized Exams

- SAT Evidence-Based Reading & Writing score of 500 or higher (10yrs)
- ACT English Language Arts score of 22 or higher (10yrs)

## Transfer Credits

- We transfer in English Composition courses with a C- or higher with official transcripts from regionally accredited colleges and universities

# Where to send your transcripts and score reports?

High School  
Transcripts

[transcripts@middlesex.edu](mailto:transcripts@middlesex.edu)

SAT/ACT/GED/HiSet  
Score Reports

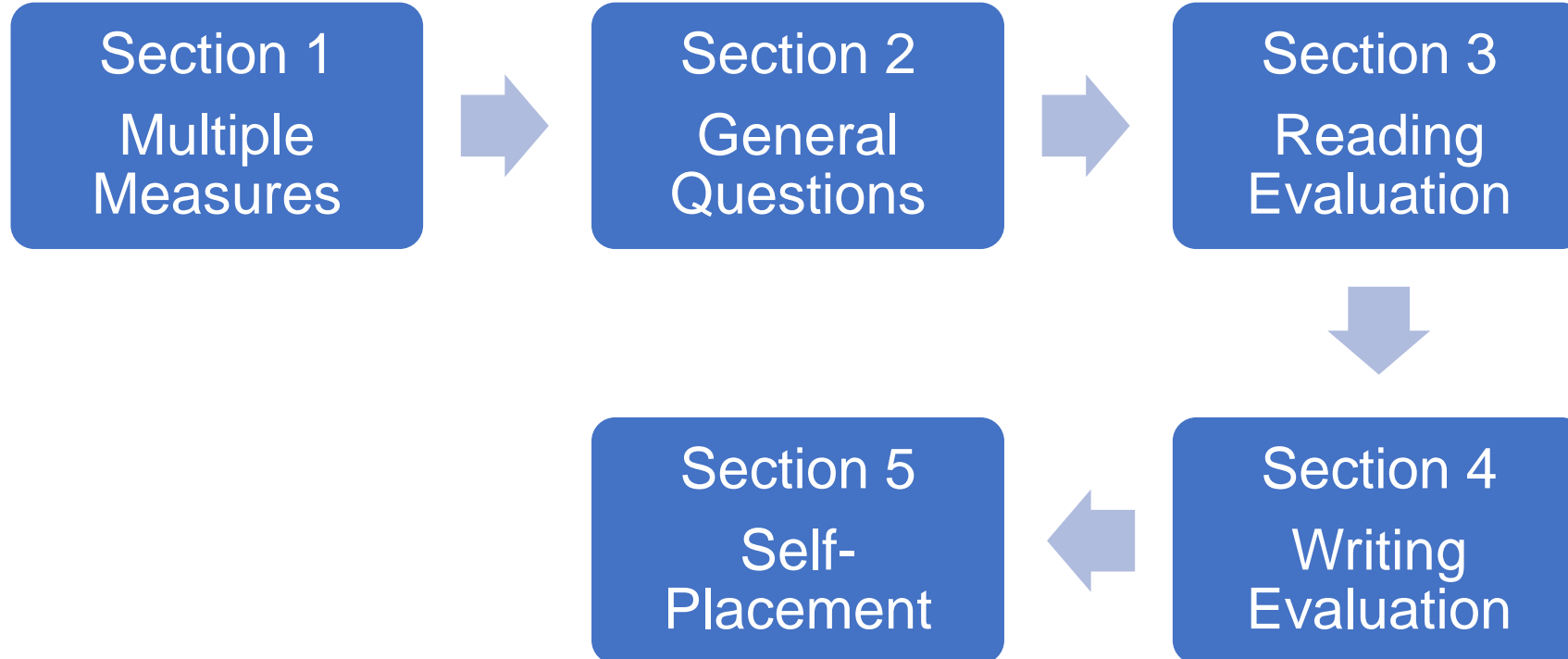
[placement@middlesex.edu](mailto:placement@middlesex.edu)

College Transcripts

[transcripts@middlesex.edu](mailto:transcripts@middlesex.edu)



# English Guided Self-Placement



# Section 2: General Questions

1-4

- Background questions

5-7

- Reading textbooks and novels
- Writing essays

8

- Ability to speak in English and be understood by other people

## Short Reading



### Section 3 – Reading Evaluation

The short reading below represents a typical text that you may be assigned to read and write about ENG 101 (English Composition I). Please do the short reading below and then answer a series of questions. This is not a test but will assist you in your final English course selection.

#### Short Reading #1 Demanding More from College by Frank Bruni

I'm beginning to think that college exists mainly so we can debate and deconstruct it.

What's its rightful mission? How has it changed? Is it sufficiently accessible? Invariably worthwhile?

As the fall semester commenced, the questions resumed. Robert Reich, the country's labor secretary during the Clinton administration, issued such a pointed, provocative critique of the expense and usefulness of a traditional liberal arts degree that Salon slapped this headline on it: "College is a ludicrous waste of money."

Meanwhile, the sociologists Richard Arum and Josipa Roksa were out with a new book, "Aspiring Adults Adrift," in which they assessed how a diverse group of nearly 1,000 recent graduates were faring two years after they finished their undergraduate studies. About one quarter of them were still living at home. And nearly three-quarters

# Section 3: Reading Evaluation

Score	Course Recommendation
4 or 5	ENG 092
3	ENG 109 with ENG 101
1 or 2	ENG 101 or ENG 101 Honors





## Writing Evaluation

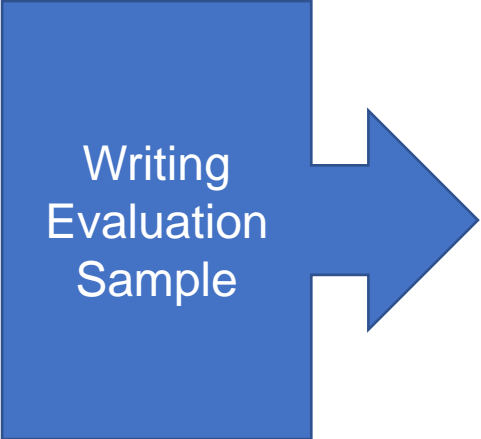
### Section 4 – Writing Evaluation

1. In the past three years, what types of writing have you done most?

- Papers in English classes
- Papers in other classes
- E-Mails at work
- Reports or memos at work
- Online writing (social media posts, blogs, newsletters, other)
- Poetry, stories, or songs
- Other \_\_\_\_\_

2. In the past three years, how many papers or reports have you written that incorporate ideas and information from books, articles, or websites?

- I have not done this in the last three years
- One to three times



Writing  
Evaluation  
Sample

Next, please read the passage below and use it to write an essay in response to the question.

The reasons students choose to attend college have been steadily shifting over the course of the last half-century. Ira Harkavy and Matthew Hartley of the University of Pennsylvania write, “In 1900, barely 4 percent of all high school graduates attended college. By 1970, that number had grown more than tenfold (45 percent). The reasons for attending college began to shift. Economic purposes gained ascendancy. Data from an annual survey of more that 200,000 incoming freshman by the Higher Education Research Institute (HERI) at UCLA show that in 1969, 80 percent of incoming freshman believed that developing a meaningful philosophy of life was a very important goal; by 1996, that percentage diminished to 42 percent. In 1979, half of the students (49 percent) said they were attending college “to be able to make more money: by 1991,

4/30/2020 -11

# Section 4: Writing Evaluation (Essay)

ENG 092

-Not very confident in comprehending, writing, correcting for grammar, and have not written papers in the last 3 years

ENG 109  
with ENG  
101

-Combination of confident and not very confident  
-You have written some papers in the last 3 years

ENG 101  
or ENG  
101  
Honors

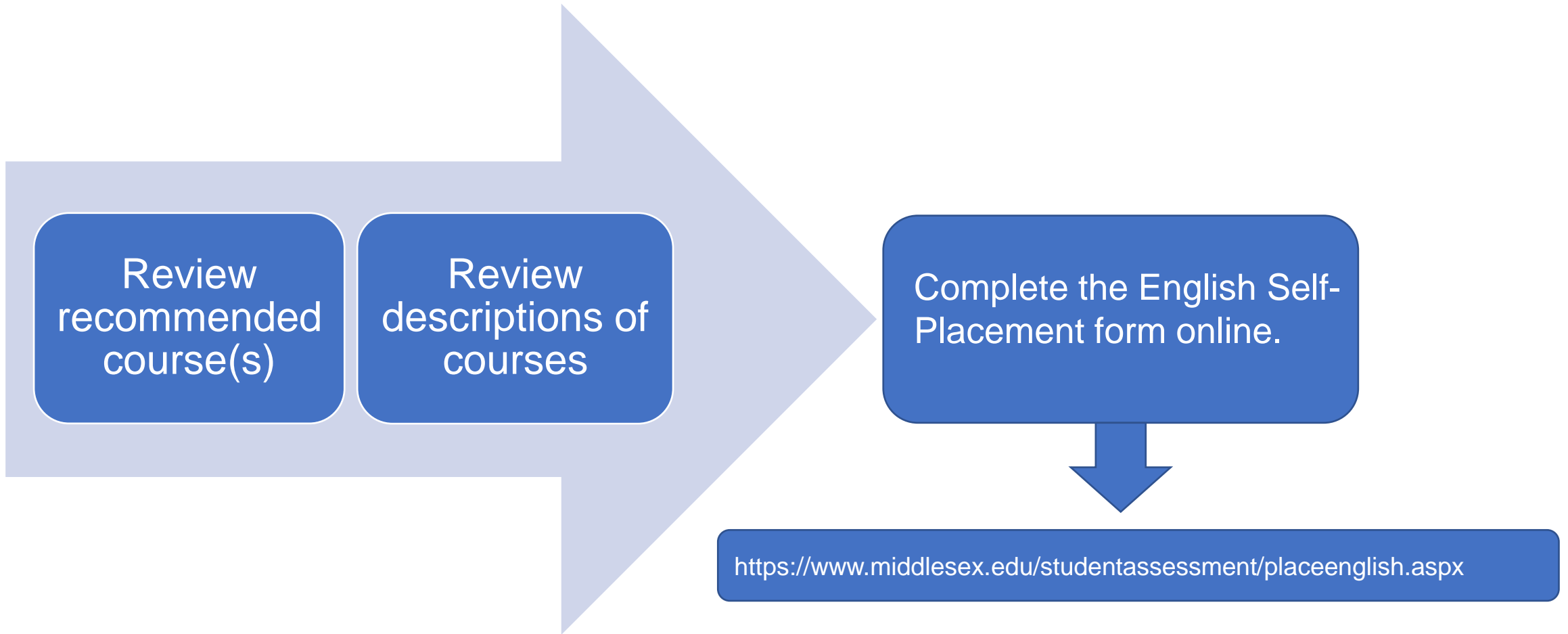
-Confident and you have written papers in the last 3 years

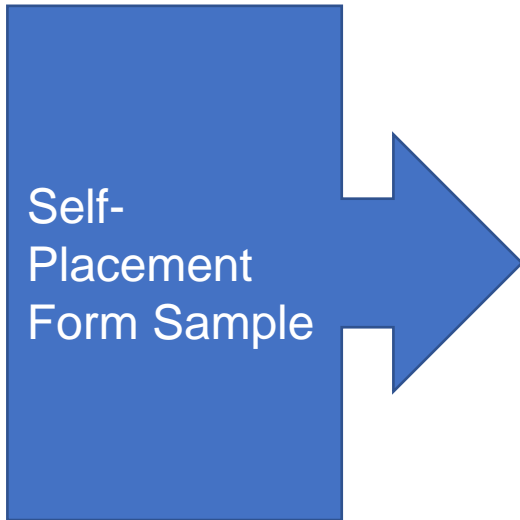
Need help with English placement?  
Email [ACE@middlesex.edu](mailto:ACE@middlesex.edu) to schedule a one-on-one  
“Make the Right Choice” Zoom appointment.



Course	ENG 092 Reading, Writing, Reasoning	ENG 109 (with ENG 101) Critical Thinking/English Composition I	ENG 101 English Composition I	ENG 101 Honors English Composition I Honors
<b>Credits</b>	6 credits (developmental)	3 credits for ENG 101 <u>AND</u> 3 credits for ENG 109 (Humanities/free elective). <b>Courses must be taken together.</b> Sections are linked and taught by the same instructor.	3 credits	3 credits
<b>Description</b>	Reading, Writing, and Reasoning (RWR) is a 6-credit integrated reading, writing, and critical thinking course that includes a one-hour weekly workshop. It deepens and solidifies literacy skills and strategies for meeting the rigorous demands of academic work.	This course enhances students' ability to read insightfully, and think critically about a variety of texts they may encounter in their academic and professional careers--ultimately creating "a habit of mind characterized by the comprehensive exploration of issues, ideas, artifacts, and events before accepting or formulating an opinion or conclusion" (AAC&U). By registering for this course, the student will also be registered in a linked ENG 101 taught by the same instructor.	Students will develop academic writing, close reading, and critical thinking skills. Using a writing process that includes pre-writing, drafting, peer and instructor feedback, and revision, students will produce multiple source-based, thesis driven essays with appropriate use of MLA documentation.	English Composition 1 Honors: Choose ENG 101 Honors if you want to enhance your learning experience by concentrating on important skills for career and/or transfer: critical thinking, research, verbal presentation, and interpretive analysis. Honors courses provide a place for you to work with like-minded students working closely with instructors who help guide and prepare you for the job market and transfer to four-year colleges and universities.

# Section 5: Placement





### English Self-Placement Form

First Name

Last Name

Student ID

Phone

Preferred Email

Birth Date  

Have you submitted an Admissions application?  
 Yes  No

- Please check off your course placement
- ELL 054 ELL Reading and Writing 1
  - ELL 055 ELL Reading and Writing 2
  - ENG 092 Reading, Writing, Reasoning
  - ENG 109 with ENG 101 Critical Thinking/English Composition I
  - ENG 101 English Composition 1
  - ENG 101 Honors English Composition 1/Honors

Please provide the reasons you believe this is the best course placement for you. In your description also include which course best describes your previous experience.

<https://www.middlesex.edu/studentassessment/placeenglish.aspx>

# Math Placement



# College Level Math Course Placement

## High School Transcript

- Mid-year or final 2.7 GPA (3yrs)

**MAT 120 – MAT 195**

- 2.7 GPA + Algebra II  
B or better (3yrs)

**MAT 196**

- 2.7 GPA + Trig. & Precalculus  
B or better (3yrs)

**MAT 290**

## Standardized Exams

SAT Math score of 600 or higher (3yrs) - **MAT 290**

SAT Math score of 550 or higher (3yrs) - **MAT 195**

ACT Math score of 22 or higher (3yrs)

- **MAT 120 – MAT 195**

## College Transcripts

We transfer in college level math courses with a C- or higher with official transcripts from regionally accredited colleges and universities.



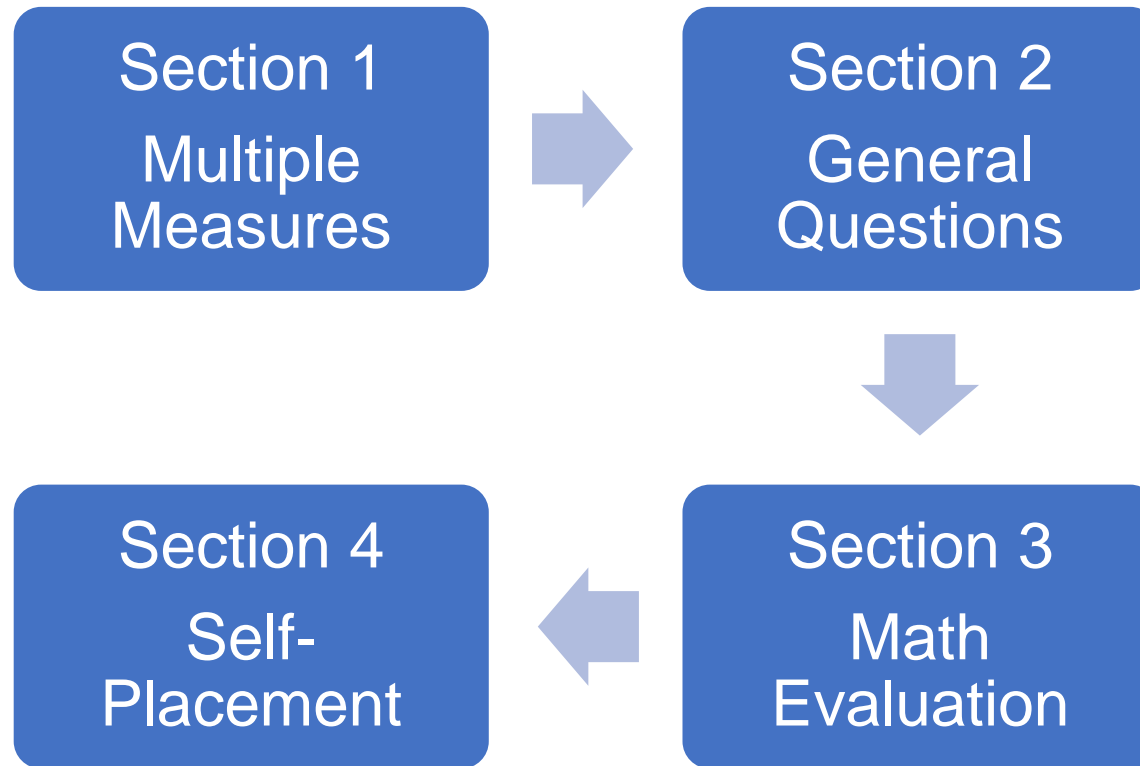
# Where to send your transcripts and score reports?

High School  
Transcripts  
transcripts@middlesex.edu

ACT/SAT Score  
Reports  
placement@middlesex.edu

College Transcripts  
transcripts@middlesex.edu

# Math Guided Self-Placement



# Section 2: General Questions

What is the highest level of Math that you took?

Are you comfortable learning new Math concepts?

What was your experience in previous Math courses?

What is your major?

# Section 3: Math Evaluation

Sample Course	Description	Problems
<b>MAT120</b> <b>Math for Liberal Arts</b>	<p>Topics will be drawn from areas such as: collecting, describing and analyzing data; probability and decision-making; loans and investments; population growth; linear programming; and geometry of measurement.</p> <p>Course uses group work/projects and focuses on real-life applications of concepts.</p>	<ol style="list-style-type: none"> <li>1. Change the following into a percentage. <math>\frac{3}{14}</math></li> <li>2. Change the percentage to a fraction in lowest terms 74%</li> <li>3. Change the percentage to a decimal 52%</li> <li>4. Determine the value of the expression when <math>x=7</math> <math>3\sqrt{(10-x)^2}</math></li> <li>5. Solve for x <math>2(x-7) = 5(x+3) - x</math></li> <li>6. Solve <math>4 - (3 + 7) + 15 \div 5 - 2</math></li> <li>7. <math>\frac{7.8}{13} = \frac{n}{2.6}</math> solve for n</li> </ol>

# Math Course Placement Levels

## Courses

MAT 001 Preparation for College Math – Module 1

MAT 001 Preparation for College Math – Module 5

MAT 001 Preparation for College Math – Module 70/80

MAT 120 Math for Liberal Arts (Co-requisite: MAT 007 with MAT 120)

MAT 177 Statistics (Co-requisite: MAT 007 with MAT 177)

MAT 130 Elements of Math I (Early Childhood and Elementary Education majors ONLY)

MAT 131 Elements of Math II (Early Childhood and Elementary Education majors ONLY)

MAT 165 Trigonometry for Engineering & Science

MAT 182 Precalculus for Business & Social Sciences

MAT 195 Precalculus for Engineering & Science (Co-requisite: MAT 008 with MAT 195)

# Next Step

If you solved all the problems correctly and you feel comfortable with math

- take the math course required for your program

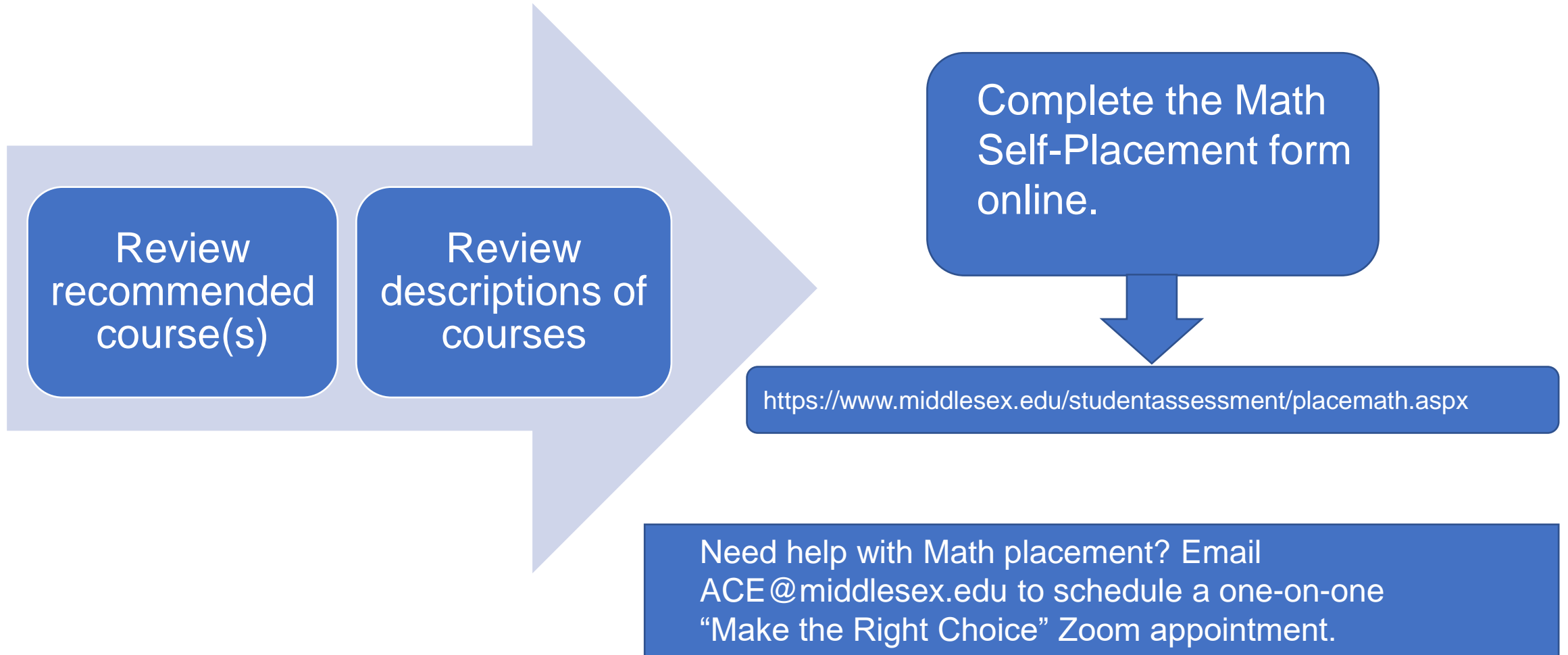
If you solved most of the problems correctly but would benefit from some support

- take MAT 007 with MAT 120 or MAT 177
- take MAT 008 with MAT 195

If you did not solve all the problems correctly, or you do not feel comfortable with math

- take MAT 001
- review the problems for Modules 70/80 or Module 5

# Section 5: Placement



# Math Guided Self-Placement Form

Please make sure that you completed the Math Guided Self-Placement document before submitting this form.

First Name


Last Name

Preferred Name

Student ID

Phone

Preferred Email

Birth Date  

Have you submitted an Admissions application?

- Yes  No

Have you completed the Math Guided Self-Placement document?

- Yes  No

Preferred degree/certificate/pathway

Please check off your course placement

- MAT 001 Preparation for College Math (Begin at Module 1)
- MAT 001 Preparation for College Math (Begin at Module 5)
- MAT 001 Preparation for College Math (Begin at Module 70/80)
- MAT 007 with MAT 120 Skills Development/Math for Liberal Arts

- MAT 007 with MAT 177 Skills Development/Statistics
- MAT 008 with MAT 195 Skill Development/Precalculus for Engineering and Science
- MAT 120 Math for Liberal Arts
- MAT 130/131 Elements of Math 1/Elements of Math 2
- MAT 165 Trigonometry for Engineering and Science
- MAT 177 Statistics
- MAT 182 Precalculus for Business and Social Science
- MAT 195 Precalculus for Engineering and Science

How many problems in the Math Guided Self-Placement document did you answer correctly for the Math course indicated above?"

Please provide the reasons you believe this is the best course placement for you.

Submit

Print this page

Self-Placement  
Form Sample





Visit our website at [www.middlesex.edu/studentassessment](http://www.middlesex.edu/studentassessment)

Email us at [placement@middlesex.edu](mailto:placement@middlesex.edu)

### **Bedford Campus**

Enrollment Center Building – Rm 114 & 115  
591 Springs Road  
Bedford, MA 01730

#### ***Kathrina Gaffron***

*gaffronk@middlesex.edu*  
*(781) 280-3735*

#### ***Roger Scales***

*scalesr@middlesex.edu*  
*(781) 280-3723*

### **Lowell Campus**

Cowan Center Building – Rm 205  
33 Kearney Square  
Lowell, MA 01852

#### ***Brittney Moore-Miller***

*mooreb@middlesex.edu*  
*(978) 656-3016*

#### ***Kathleen Downing***

*downingk@middlesex.edu*  
*(978) 656-3337*