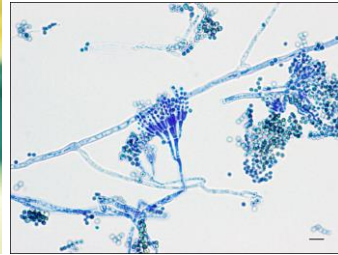
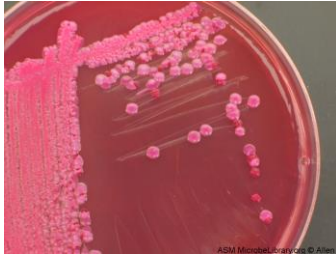




Introduction to Medical Microbiology Laboratory Workshop
January 6-9 & 12, 2015, 10:00 AM to 3:30 PM



Location: Weed Hall, Room 209

Workshop Instructor: Ms. Kristin Palladino, MS, MLS (ASCP)^{CM} (Kristin_Palladino@uml.edu)

The Department of Clinical Laboratory and Nutritional Sciences is holding a one week workshop that will provide hands-on training on the basic laboratory techniques used in the isolation and identification of clinically significant bacteria including staining, aseptic technique, biochemical testing and antimicrobial susceptibility testing. Students will learn more specifically about the pathogenic bacteria associated with each organ system and emphasis will be placed on differentiating between pathogenic and nonpathogenic bacteria in clinical specimens. Students will also be provided with a brief overview of pathogenic fungi and protozoa. The laboratory experiments will help students develop the knowledge and skills typically required to practice Medical Microbiology.

The daily course schedule will include short lectures followed by laboratory experiments.

General Daily Workshop Schedule:

10:00 AM-10:45 AM: Introduction and Background Lecture

10:45 AM-12:30 PM: Morning Laboratory Session

12:30 PM- 1:30 PM: Lunch Break

1:30 PM- 2:45 PM: Afternoon Laboratory Session

2:45 PM- 3:30 PM: Review of Laboratory Activity

In case of a snow day, the make-up day will be Tuesday, January 13th

Space is limited to 8 participants and on a first come first serve basis. To ensure your spot your registration must be received by December 12th, 2014. To register go to:

<https://www.middlesex.mass.edu/pathwayscenter/> and click on the UML Workshops button on the left.

For more information, email FRATERA@middlesex.mass.edu

LUNCH IS INCLUDED EACH DAY!