

Middlesex Community College Student Assessment

Kathrina Gaffron & Brittney Moore-Miller

Math Placement



College Level Math Course Placement

High School Transcript

- Mid-year or final 2.7 GPA (3yrs)

MAT 120 – MAT 195

- 2.7 GPA + Algebra II

B or better (3yrs)

MAT 196

- 2.7 GPA + Trig. & Precalculus

B or better (3yrs)

MAT 290

Standardized Exams

SAT Math score of 600 or higher (3yrs)

MAT 290

ACT Math score of 22 or higher (3yrs)

MAT 120 – MAT 195

College Transcripts

We transfer in college level math courses with a C- or higher with official transcripts from regionally accredited colleges and universities.

Where to send your transcripts and score reports?

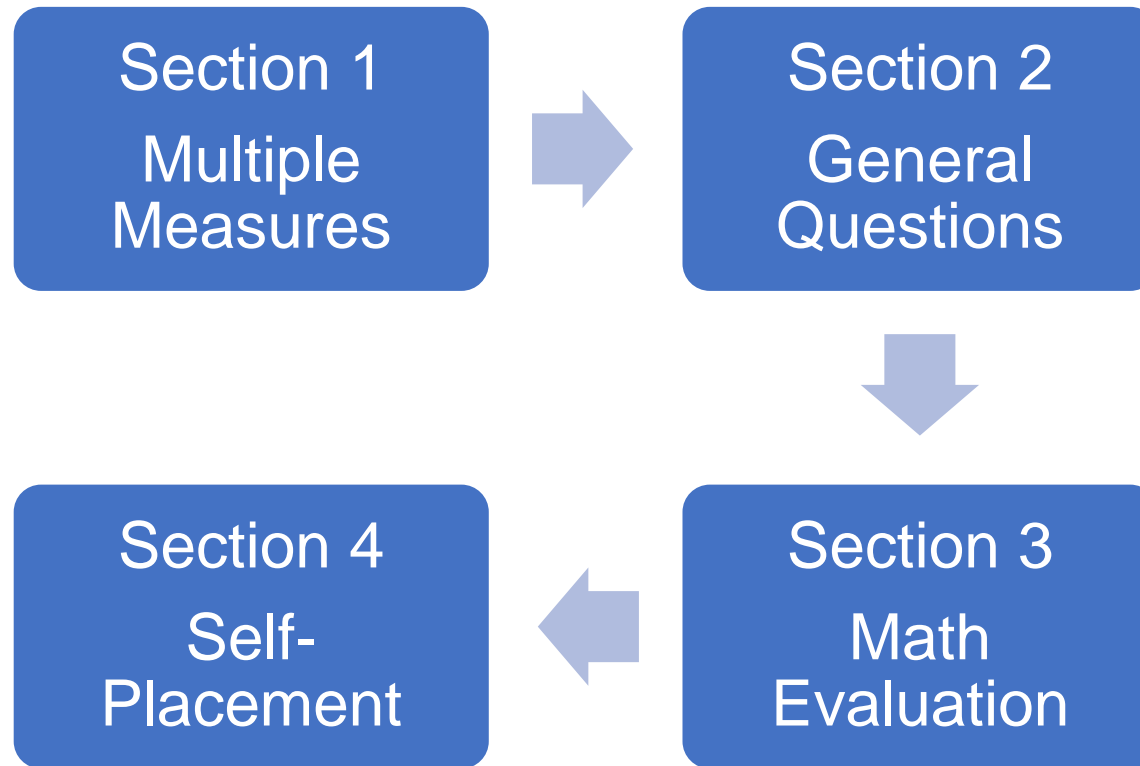
High School Transcript
transcripts@middlesex.mass.edu

SAT Score Report
placement@middlesex.mass.edu

ACT Score Report
placement@middlesex.mass.edu

College Transcripts
registrar@middlesex.mass.edu

Math Guided Self-Placement



Section 2: General Questions

What is the highest level of Math that you took?

Are you comfortable learning new Math concepts?

What was your experience in previous Math courses?

What is your major?

Section 3: Math Evaluation

| Sample Course | Description | Problems |
|---|--|---|
| MAT120 Math for Liberal Arts | <p>Topics will be drawn from areas such as: collecting, describing and analyzing data; probability and decision-making; loans and investments; population growth; linear programming; and geometry of measurement.</p> <p>Course uses group work/projects and focuses on real-life applications of concepts.</p> | <ol style="list-style-type: none"> 1. Change the following into a percentage. $\frac{3}{14}$ 2. Change the percentage to a fraction in lowest terms 74% 3. Change the percentage to a decimal 52% 4. Determine the value of the expression when $x=7$ $3\sqrt{(10-x)^2}$ 5. Solve for x $2(x-7) = 5(x+3) - x$ 6. Solve $4 - (3 + 7) + 15 \div 5 - 2$ 7. $\frac{7.8}{13} = \frac{n}{2.6}$ solve for n |

Math Course Placement Levels

Courses

MAT 001 Preparation for College Math – Module 1

MAT 001 Preparation for College Math – Module 5

MAT 001 Preparation for College Math – Module 70/80

MAT 120 Math for Liberal Arts (Co-requisite: MAT 007 with MAT 120)

MAT 177 Statistics (Co-requisite: MAT 007 with MAT 177)

MAT 130 Elements of Math I (Early Childhood and Elementary Education majors ONLY)

MAT 131 Elements of Math II (Early Childhood and Elementary Education majors ONLY)

MAT 165 Trigonometry for Engineering & Science

MAT 182 Precalculus for Business & Social Sciences

MAT 195 Precalculus for Engineering & Science (Co-requisite: MAT 008 with MAT 195)

Next Step

If you solved all the problems correctly and you feel comfortable with Math

- take the listed Math course

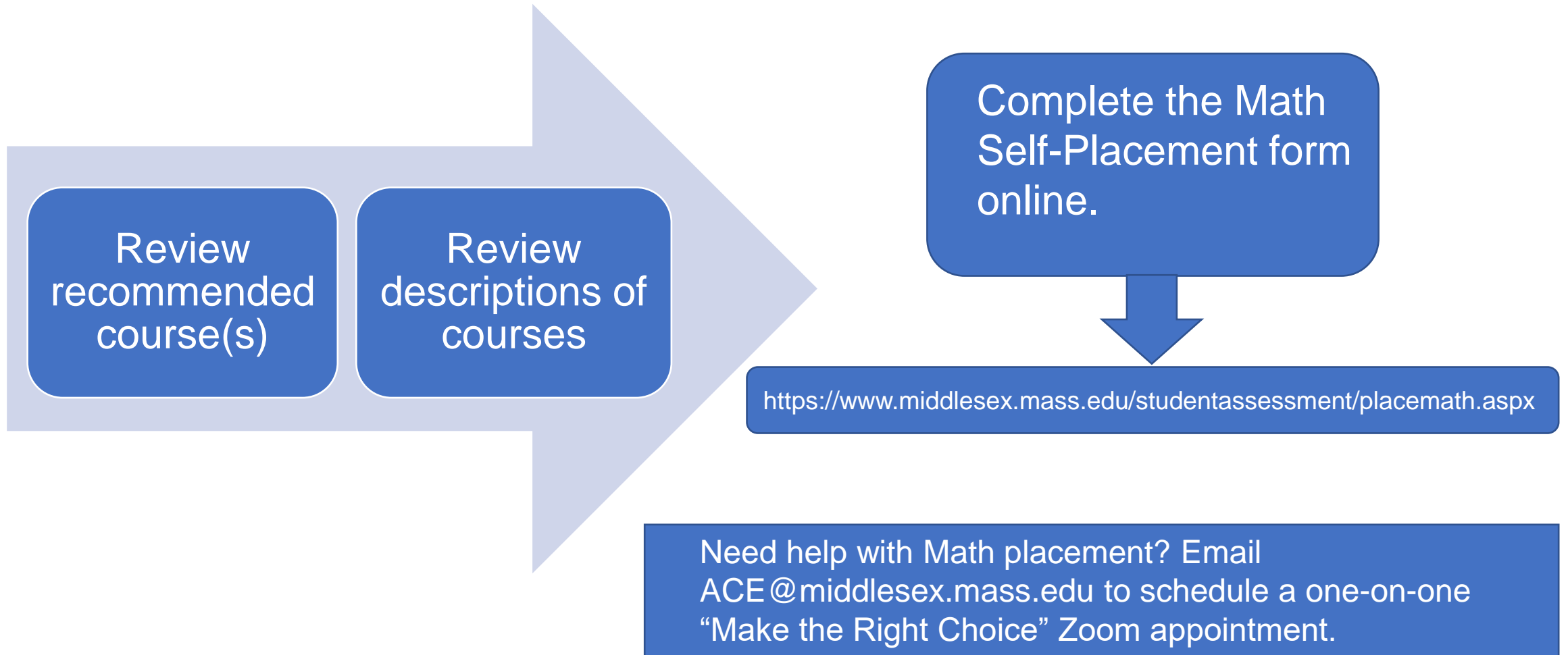
If you solved most of the problems correctly but would benefit from some support

- take MAT 007 with MAT 120 or MAT 177
- take MAT 008 with MAT 195

If you did not solve all the problems correctly, or you do not feel comfortable with Math

- take MAT 001
- review the problems for Modules 70/80 or Module 5

Section 5: Placement



Math Guided Self-Placement Form

Please make sure that you completed the Math Guided Self-Placement document before submitting this form.

▼

First Name

Last Name

Preferred Name

Student ID

Phone

Preferred Email

Birth Date

mm/dd/yyyy

Have you submitted an Admissions application?

☐ Yes ☐ No

Have you completed the Math Guided Self-Placement document?

☐ Yes ☐ No

Preferred degree/certificate/pathway

Please check off your course placement

- ☐ MAT 001 Preparation for College Math (Begin at Module 1)
- ☐ MAT 001 Preparation for College Math (Begin at Module 5)
- ☐ MAT 001 Preparation for College Math (Begin at Module 70/80)
- ☐ MAT 007 with MAT 120 Skills Development/Math for Liberal Arts

- ☐ MAT 007 with MAT 177 Skills Development/Statistics
- ☐ MAT 008 with MAT 195 Skill Development/Precalculus for Engineering and Science
- ☐ MAT 120 Math for Liberal Arts
- ☐ MAT 130/131 Elements of Math 1/Elements of Math 2
- ☐ MAT 165 Trigonometry for Engineering and Science
- ☐ MAT 177 Statistics
- ☐ MAT 182 Precalculus for Business and Social Science
- ☐ MAT 195 Precalculus for Engineering and Science

How many problems in the Math Guided Self-Placement document did you answer correctly for the Math course indicated above?"

Please provide the reasons you believe this is the best course placement for you.

Submit

Print this page

Self-Placement
Form Sample



Visit our website at www.middlesex.mass.edu/studentassessment

Email us at placement@middlesex.mass.edu

Bedford Campus

Enrollment Center Building – Rm 114 & 115
591 Springs Road
Bedford, MA 01730

Kathrina Gaffron

gaffronk@middlesex.mass.edu
(781) 280-3735

Roger Scales

scalesr@middlesex.mass.edu
(781) 280-3723

Lowell Campus

Cowan Center Building – Rm 205
33 Kearney Square
Lowell, MA 01852

Brittney Moore-Miller

mooreb@middlesex.mass.edu
(978) 656-3016

Kathleen Downing

downingk@middlesex.mass.edu
(978) 656-3337