

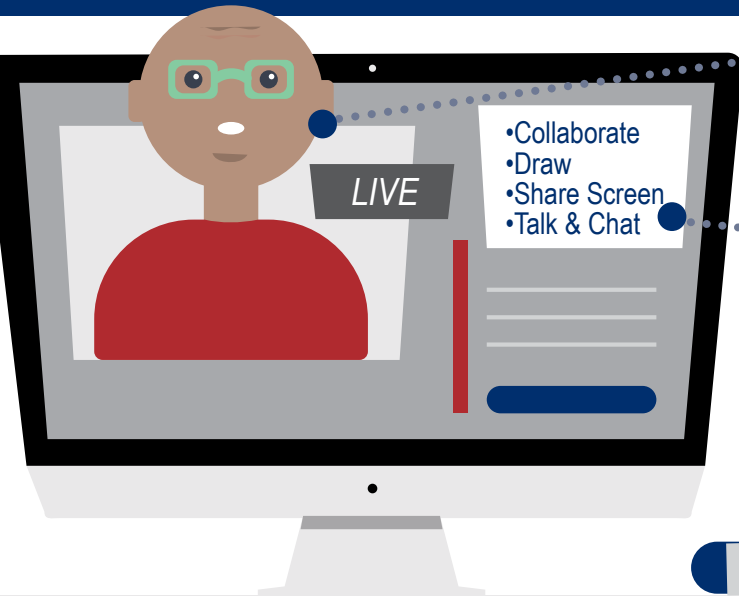
CHOOSING AN ONLINE COURSE

SYNCHRONOUS *vs* ASYNCHRONOUS

Synchronous learning requires the students and instructors to be present at the same time for online instruction.

Asynchronous learning does not require the students and instructors to be present at the same time for online instruction.

SYNCHRONOUS LEARNING



VIRTUAL CLASSROOM

Class meetings take place in a live virtual meeting room where students and teachers meet together to communicate using voice, video and other online tools.

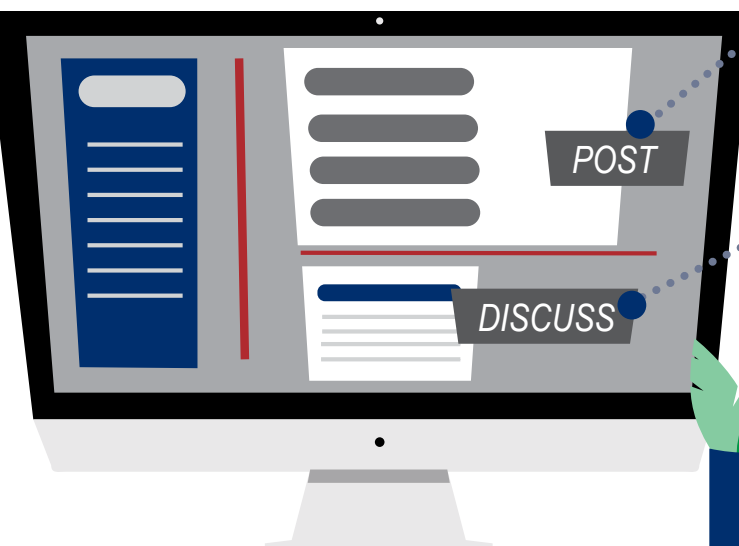
COLLABORATE WITH SHARED SPACES

Classes offer a shared environment that allows multiple students and the instructor to collaborate by sharing screens, talking, chatting or writing and drawing on a shared virtual white board.

SCHEDULED MEETING TIMES

Classes require students and instructors to meet online at the times and days listed in the published course schedule. All attendees must be online with a camera and a microphone and connected to the internet at the specific meeting times.

ASYNCHRONOUS LEARNING



WEEKLY DUE DATES WITH FLEXIBLE WORK TIMES

Students have flexibility to manage work, family and other obligations while still getting course work done by the deadlines. Interact with your instructor and other students using messages and discussion boards

COLLABORATE WITH THE CLASS

Students and instructors connect and collaborate through email and discussion boards. Discussion boards allow students in the same course to discuss materials in real time. Email allows students to ask questions and get feedback from their instructor.

STICK TO A TIME FRAME

Pay attention to assignment due dates and make sure to ask for help through Blackboard or email if you are unsure what to do. Set up a regular time to work on your course while still meeting your other responsibilities.

MIDDLESEX COMMUNITY COLLEGE ALSO OFFERS



Blended (Hybrid) Classes

Blended or hybrid learning presents a combination of traditional classroom and/or lab instruction with online learning. See your published course schedule for face-to-face and on-campus meeting times. All face-to-face meetings require small numbers of students, appropriate social distancing, and personal protective equipment (PPE).



On Campus (Face-to-Face) Classes

All face-to-face classes require small numbers of students, appropriate social distancing, and personal protective equipment (PPE).