

Asian Studies Partnership

MIDDLESEX COMMUNITY COLLEGE • BRIDGEWATER STATE COLLEGE

-PRESENT-

An Asian Studies Development Program National Symposium

CROSSING BORDERS

IDENTITIES, INSIGHTS, AND EXPRESSIONS IN EAST ASIA

April 2-5, 2009 ■ Boston, Massachusetts

SPONSORED BY



Asian Studies Development Program
WITH SUPPORT FROM THE FREEMAN FOUNDATION





CROSSING BORDERS

IDENTITIES, INSIGHTS, AND EXPRESSIONS IN EAST ASIA

The Asian Studies Development Program was initiated in 1990 by the East-West Center and University of Hawaii. Its mission is to infuse Asian content and perspectives into the core curriculum at American two-year and four-year colleges and universities. The ASDP network now includes more than 400 colleges in 49 states, with 20 schools designated as ASDP regional centers.

Middlesex Community College was involved in the early development of ASDP and was the first institution to become a regional center. Over almost two decades, Middlesex and ASDP have collaborated in organizing ASDP workshops and conferences. This collaborative symposium between Middlesex and Bridgewater State, which highlights the importance of China and Japan in both traditional and contemporary contexts, is indicative of the innovative leadership of both institutions in promoting international education.

—Elizabeth Buck, Co-Director of ASDP

SCHEDULE:

Thursday, April 2

5:30 – 8:30 p.m.

Reception & Welcome

Old State House, 206 Washington St. Boston, MA

Keynote Address: *China in a Global Context*

Tu Wei-ming, *Harvard-Yenching Professor of Chinese History, Philosophy and Confucian Studies, Harvard University*

Friday, April 3

8 – 8:30 a.m.

Registration & Continental Breakfast

Mezzanine Conference Room

Jean Mayer USDA Human Nutrition Research Center on Aging (HNRC) at Tufts University, 711 Washington Street, Boston, MA

PRESENTATIONS

Mezzanine Auditorium

8:30 – 11:45 a.m.

China Keynote: *The Internationalization of Confucian Thought*

Henry Rosemont, *George B. and Willma Reeves Distinguished Professor of Liberal Arts Emeritus, Saint Mary's College of Maryland and Visiting Professor of East Asia and Religious Studies, Brown University*

10 – 10:15 a.m.

Break

Friday, April 3 (CONT.)

Noon – 1:45 p.m.	Lunch and Guzheng Performance by Shin-yi Yang Empire Garden, Chinatown, 690 Washington Street, Boston, MA
2 – 4 p.m.	Teaching Modern Chinese Cinema and Literature Xueping Zhong, Associate Professor of Chinese Language and Literature, Tufts University
3 – 3:15 p.m.	Break
4:15 – 5:15 p.m.	Westernization of Lifestyles in Asian Countries: A Playground for Gene-Environment Interactions Jose Ordovas, Senior Scientist and Lab Director, Nutrition and Genomics Laboratory, HNRCA, Tufts University Chao-Qiang Lai, Research Molecular Biologist, USDA Agricultural Research Service Nutrition and Genomics Laboratory, HNRCA, Tufts University
	Combating Nutrition Inadequacy Using Carotenoid Rich Plant Foods Guangwen Tang, Scientist and Lab Director, Carotenoids and Health Laboratory, HNRCA, Tufts University
5:30 – 6:30 p.m.	Guided Tour of HNRCA (optional) Sign up at registration table

Saturday, April 4

8 – 8:30 a.m.	Registration & Continental Breakfast Mezzanine Conference Room Jean Mayer USDA Human Nutrition Research Center on Aging (HNRCA) at Tufts University, 711 Washington Street, Boston, MA
---------------	---

PRESENTATIONS Mezzanine Auditorium

8:30 – 10:30 a.m.	Chinese and Japanese Art: an Overview Steve Goldberg, Associate Professor of Chinese Art History, Hamilton College
10:30 – 10:45 a.m.	Break
10:45 a.m. - 12:45 p.m.	Japanese Culture from Woodblock Print to Modern Manga Adam Kern, Associate Professor of Japanese Literature, Harvard University
1 – 2 p.m.	Lunch China Pearl, Chinatown, 9 Tyler Street, Boston, MA

Saturday, April 4 (CONT.)

2:15 – 4:45 p.m.

Japan Keynote: *Global Asia: Asian Cultures and Societies in the Contemporary American Gaze*
Theodore Bestor, Chairperson and Professor,
Anthropology Department, Harvard University

3:15 – 3:30 p.m.

Break

5 – 6 p.m.

Curriculum & Pedagogical Reflections - Crossing Borders
Henry Rosemont, Adam Kern, Steve Goldberg, Peter Hershock
Moderator: Elizabeth Buck

Sunday, April 5


10 a.m. – 1 p.m.

**Special Tour Options: Museum of Fine Arts,
Chinatown Tour, or Peabody Essex Museum**
Sign up at registration table
Ticket fees may apply • Transportation to PEM provided

PRESENTERS:

■ **Tu Wei-ming** is Harvard-Yenching Professor of Chinese History and Philosophy and Confucian Studies at Harvard University and Director of the Harvard-Yenching. He holds honorary professorships from Zhejiang and Renming Universities and the Shanghai Academy of Social Sciences. Professor Tu is on the board of the Chinese Heritage Center in Singapore, an international advisor of Rahman University in Malaysia, a member of the “Group of Eminent Persons” appointed by Kofi Annan to facilitate the Dialogue among Civilizations, a participant of the World Economic Forum, a moderator of the Aspen Institute, and a fellow of the American Academy of Arts and Sciences. He has published six books in English, five in Chinese, and more than a hundred articles primarily focusing on the modern transformation of Confucian humanism. A five-volume anthology of his works was published in Chinese in 2001.

■ **Henry Rosemont, Jr.** is concurrently the George B. and Willma Reeves Distinguished Professor of the Liberal Arts Emeritus at Saint Mary’s College of Maryland; senior consulting professor at Fudan University, Shanghai, China; and Visiting Professor of East Asia and Religious Studies at Brown University. Professor Rosemont’s interests include Chinese thought, logic and linguistics, and global justice. He is the author of more than sixty articles in scholarly journals and anthologies and editor of the Society for Asian and Comparative Philosophy’s Monograph Series. His books include *A Chinese Mirror*, *Leibniz: Writings on China, Rationality & Religious Experience*, *The Analects of Confucius: A Philosophical Translation* (with Roger Ames), and the forthcoming *Radical Confucianism*.




■ **Theodore Bestor** is Chairperson and Professor of Anthropology at Harvard University and a specialist on contemporary Japanese society and culture, focusing much of his research on Tokyo. He has written widely on urban culture and history, markets and economic organization, food culture, the fishing industry, and popular culture. His most recent book, *Tsukiji: The Fish Market at the Center of the World* is based on research he has been carrying out since 1991 at Tokyo's vast Tsukiji wholesale market, the world's largest marketplace for seafood and the center of Japan's sushi trade. He is working on a book tentatively entitled *Global Sushi* that will look at globalization via the interaction of the fishing industry and culinary fashions.

■ **Adam Kern** is Associate Professor of Japanese Literature at Harvard University and has research interests that include the popular culture, visual culture, dramatic arts, and literature—particularly comic fiction and popular poetry—of early modern Japan. His first book, *Manga from the Floating World—Comic Book Culture and the Kibyoshi of Edo Japan*, has recently been published by the Harvard University Asia Center. He is currently working on a monograph concerning Edo-period popular culture and co-editing an anthology of translations of Edo-Meiji literature. He is also under contract with Penguin Classics to author *The Penguin Book of Haiku*.

■ **Steve Goldberg** is Associate Professor of Chinese Art History at Hamilton College and has published numerous articles and chapters in books on Chinese art and philosophy, with a particular interest in Chinese calligraphy. Publications include “The Primacy of Gesture: Phenomenology and the Art of Chinese Calligraphy,” in *Metamorphosis*; “Philosophical Reflection and Visual Art in Traditional China,” in *Teaching Texts and Contexts: The Art of Infusing Asian Philosophies and Religions*; and “Recognition of the True Self: Zen Buddhism and Bokuseki Calligraphy,” in *Zen no Sho: The Calligraphy of Fukushima Keido Roshi*.

■ **Xueping Zhong** is Associate Professor of Chinese Language and Literature at Tufts University and has research interests that include Chinese culture and film. She is the author of *Masculinity Besieged? Issues of Modernity and Male Subjectivity in Late Twentieth-Century Chinese Literature*; *Some of Us: Chinese Women Growing Up in the Mao Era* (co-editor); “‘Love Live Youth’ and the Ironies of Youth and Gender in Chinese Films of the 1950s and 1960” in *Modern Chinese Literature and Culture*; and “Male Suffering and Male Desire: Politics of Reading Half of Man is Woman by Zhang Xianliang” in *Engendering China*.

■ **Jose Ordovas** is Professor of Nutrition and a Senior Scientist at the USDA-Human Nutrition Research Center on Aging at Tufts University where he also is the Director of the Nutrition and Genomics Laboratory. Dr. Ordovas is considered one of the founders of Nutrigenomics. His major research interests focus on the genetic factors predisposing to cardiovascular disease and obesity and their interaction with the environment and behavioral factors with special emphasis on diet. He has published over 480 scientific articles in peer review journals, written numerous reviews and books, and received numerous awards.



■ **Chao-Qiang Lai** is currently a USDA-ARS molecular biologist at Nutrition and Genomics Laboratory, JM-USDA Human Nutrition Research Center on Aging at Tufts University. His research is in the frontier of personalized nutrition - nutrigenomics, which utilizes both genetic epidemiology approaches as well as controlled dietary intervention studies in humans. Dr. Lai has published 40 scientific papers in international scientific journals including *Science*, *Nature Methods*, *Circulation*, *Diabetes*, *Obesity*, *Genetics*, *JAMA*, and the *Journal of Clinical Investigation*.

■ **Guangwen Tang** is a Research Scientist I and Director of the Carotenoids and Health Laboratory at the Jean Mayer USDA Human Nutrition Research Center on Aging (HNRCA) at Tufts University. She is also an Associate Professor of the Friedman School of Nutrition Science and Policy at Tufts University. Her research is in the field of carotenoids and healthy aging where she has developed a model to study the vitamin A value of plant carotenoids in humans. Dr. Tang's research studies have been funded by the USDA, NATO, and numerous others.

■ **Shin-Yi Yang** is a native of Taiwan and plays both guqin and guzheng. She is the founder of the Boston Guzheng Ensemble and is the two-time winner of the Traditional Arts Apprenticeship given by the Massachusetts Cultural Council's Folk Arts and Heritage Program and the 2008 Chinese Culture Connection Award. She has performed and lectured at Yale University, Boston University, New England Conservatory, Wellesley College, Harvard University, and M.I.T. She currently provides instruction at the Greater Boston Chinese Cultural Association (GBCCA), the Huaxin School of Arts, and through private lessons.

■ **Elizabeth Buck** is the Special Assistant for Education to the President of the East-West Center and also Co-Director of the Asian Studies Development Program (ASDP). She served as Director of Education for the East-West Center from 1999 to 2003. Her interests include internationalizing American higher education with an emphasis on Asia, the future of education in the Asia-Pacific region, and Hawaiian history and politics. Her publications include *Paradise Remade: The Politics of History and Culture in Hawaii*, 1993; and *A History of Hawaiian Music Production in Whose Master's Voice?*, 1997.

■ **Peter Hershock** is Coordinator of the Asian Studies Development Program and directs summer institutes, workshops, and field-study programs of the Asian Studies Development Program. His research focuses on cultural dimensions of issues surrounding human rights, activism, and community in the Asia Pacific region, with special emphasis on the ramifications of technological and social change. He has published widely on such topics as infusing Asian content into the core curriculum at American colleges and universities; cultural and social criticism from Buddhist perspectives; and issues related to conserving axiological diversity in the context of regional community building.



SPONSORS:

Middlesex Community College

Founded in 1970, Middlesex Community College is the largest community college in Massachusetts with campuses in downtown Lowell on the bank of the Merrimack River and on a 200-acre site in the suburban town of Bedford. Middlesex is a progressive and dynamic learning community, committed to providing educational programs and services that support personal growth and economic opportunity for its diverse student population. Dedicated to student success, the College provides excellence in teaching, personal attention, and extensive opportunities for exploration and growth. Closely linked to the fabric of the community, Middlesex's partnerships with school, business and service organizations provide leadership in economic and community development and foster a culture of civic engagement and responsive workforce development. The College's state-of-the-art programs in the liberal arts, basic skills, and more than fifty career and technical fields respond to student and community needs, providing a strong foundation for college transfer, employment, professional development and lifelong learning.

Bridgewater State College

Bridgewater State College is the largest state college in the Massachusetts Public Higher Education system and the fourth largest campus in the state system. Founded in 1840, Bridgewater is one of America's first teacher preparation institutions and has remained steadfast in its commitment to empower individuals and to instill in its students and faculty a deep appreciation for the public good. Upon this enduring foundation are built the following strategic priorities for the 21st century: fostering a rigorous and dynamic academic environment marked by intensive student-faculty engagement; establishing regional leadership in preparing students for challenging and emerging careers and graduate study; enhancing campus participation in diverse and global society; strengthening institutional relationships with regional partners; and developing sufficient resources for an attractive, well-staffed and technologically updated campus. Today, Bridgewater provides a broad range of graduate and undergraduate degree programs through its School of Graduate Studies, School of Arts and Sciences, School of Business, and School of Education and Allied Studies.

Asian Studies Development Program at the East-West Center

ASDP is a joint program of the East-West Center and the University of Hawaii. The Center was established by the US Congress in 1960 to strengthen relations and understanding among the peoples of Asia, the Pacific, and the United States. The University of Hawaii has the largest concentration of Asian studies faculty and programs in the US including centers for Chinese, Korean, South Asian and Southeast Asian Studies.

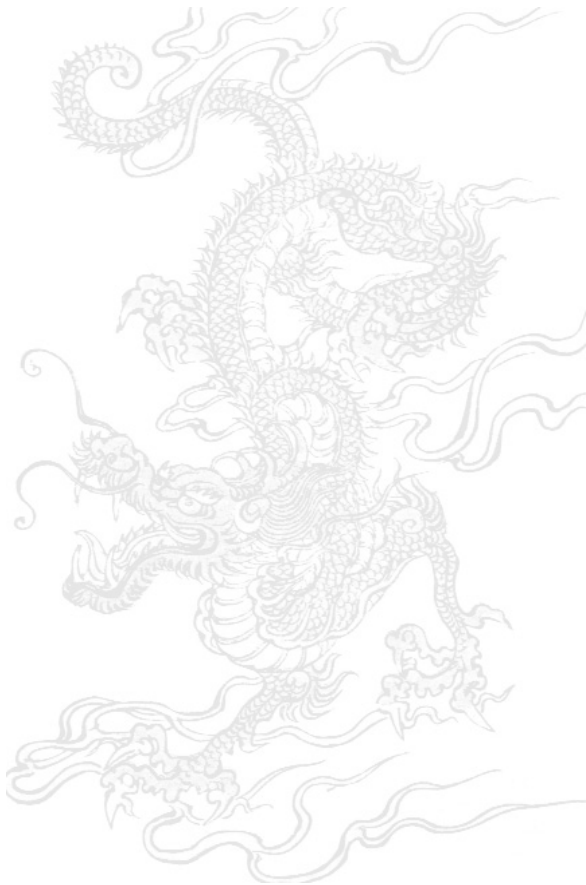
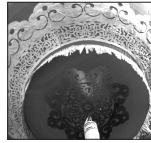
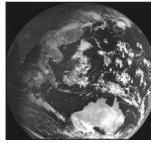
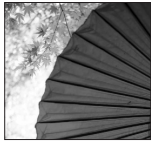
ASDP interdisciplinary programs for faculty and institutional development include summer residential institutes in Honolulu, workshops at mainland colleges and universities, and field studies in Asia. The co-directors of ASDP are Elizabeth Buck (EWC) and Roger T. Ames (UH). Peter Hershock (EWC) is the ASDP coordinator. For information on ASDP programs, visit www.eastwestcenter.org.

Jean Mayer USDA Human Nutrition Research Center on Aging at Tufts University

The Jean Mayer USDA Human Nutrition Research Center on Aging (HNRC) is one of the nation's premier research institutes and was established in 1979 within the Agriculture Research Service (ARS), the USDA's chief scientific branch, through a close partnership between The United States Department of Agriculture (USDA) and Tufts University. This partnership has enabled HNRC to become the largest research institution in the world devoted to investigating the relationship between nutrition and aging.

CROSSING BORDERS

IDENTITIES, INSIGHTS, AND EXPRESSIONS IN EAST ASIA



ASDP Symposium Co-Directors

Dona M. Cady (Middlesex): cadyd@middlesex.mass.edu
and Wing-Kai To (Bridgewater): WTO@bridgew.edu