

# Middlesex Community College

## Academic Support Department

### *How to View and Print Your Semester Class Schedule*

Browse to MyMCC at <http://mymcc.middlesex.mass.edu> and log-in to the portal. Click on the “**View Your Class Schedule**” link located under “**My Links**” in the right hand section of your screen.

■ My Links

- [mymcc Email\(1 new messages\)](#) **New Mail**
- [Register for Classes](#)
- [Add or Drop a Class](#)
- [View Your Class Schedule](#)
- [View Holds on Your Academic Record](#)
- [View Your Mid-Term and Final Grades](#)
- [Get an unofficial transcript](#)
- [Check Your Progress Toward Your Degree \(Degree Audit\)](#)
- [View or Pay Your Student Bill](#)
- [Apply for Financial Aid and Check the Status of Your Application](#)
- [View a tutorial on how to enter your cell phone number in MiddleNet](#)

View Your Class Schedule

You will then need to **re-enter** your “**UserID**” and “**Password**”.

In the next dialogue box click on the “**Enrollment and Financial Aid**” link.

User Login

Please note - the College has changed the login procedure. MiddleNet, Blackboard, and Blackboard now share the same UserID and Password.

For most Faculty and Staff, your UserID is your last name and first initial and your Password is your college assigned, nine character PIN number.

Current and former students, your UserID is your college assigned, nine character PIN number.

If you have forgotten your UserID or Password, Click [Help Me Locate My UserID and Password.](#)

Otherwise, enter your UserID and Password below and click "Login".

UserID:

Password:

ID and Password

Middlesex Community College

Personal Information | Enrollment Services & Financial Aid

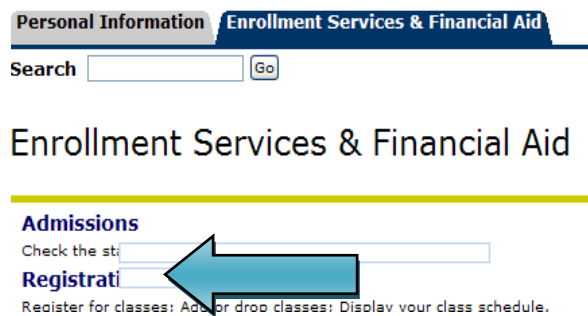
Search

Welcome, [to MiddleNet](#), Middlesex Community College's MiddleNet. Your MCC Email Address is [yourname@middlesex.mass.edu](mailto:yourname@middlesex.mass.edu). Last web access on Aug 20, 2009 at 11:13 am

**Enrollment Services & Financial Aid**  
Apply for Admission, Register for Classes, View your Academic and/or Financial Aid record, View your Student Bill, and more are to completing your program.

**Personal Information**  
View or update your address, phone number or e-mail address. [Click here to view a TUTORIAL on how to use MiddleNet.](#)

Now click on the “Registration” link.



In the next dialogue box click on “View Your Class Schedule Detail”

## Registration

Step 1: Select Term

Step 2: Look-up Classes

Step 3: Register For Classes

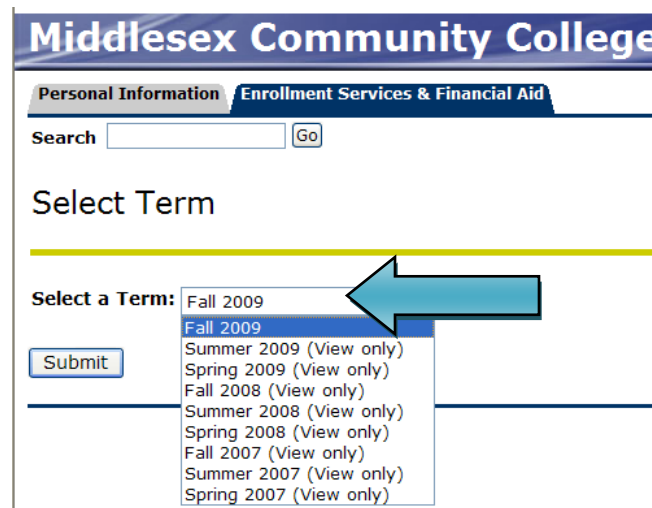
Step 4: Calculate Your Semester Bill

In order for accurate billing records you must click this link to [Calculate Your Semester Bill](#)

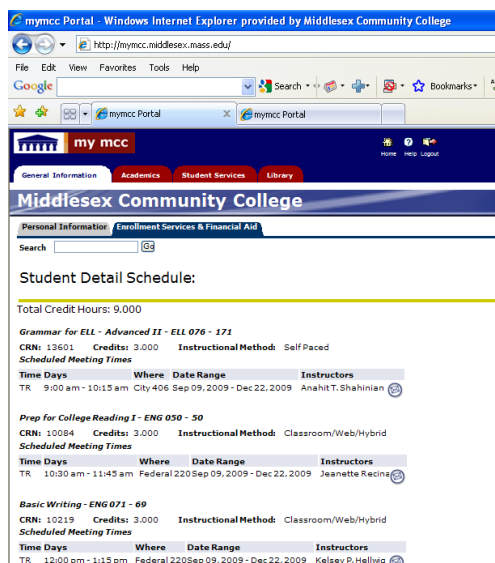
Step 5: View Your Class Schedule Detail

Step 6: View Your Class Schedule by Day & Time

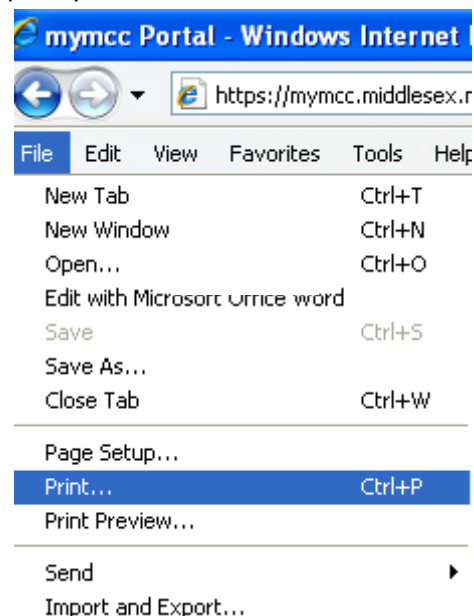
Scroll down to select the “Term” you want to view and click the “Submit” button



Now you’ve successfully accessed your semester schedule!



To print your schedule click on “File” - “Print”



You can also watch an online video demonstrating how to access and print your class schedule by typing the URL below into your browser window. If you need further assistance contact Noreen McGinness at

[mcginnessn@middlesex.mass.edu](mailto:mcginnessn@middlesex.mass.edu) or call 978-656-3279.

<https://www.middlesex.mass.edu/RLOLibrary/RLOs/281/schedule.html>